



SHINE DEVELOPERS
SMART LIVING

I.B MALL

"Find Your Perfect Space with Us."

AT "SUNCITY"

SHINE DEVELOPERS

SCHEDULE A TOUR NOW!



THIS **GORGEOUS** AND NEARLY PERFECT COMMERCIAL SPACE WILL STUN YOU WITH ITS MODERN AND DAZZLING INTERIOR FINISHES.

IT'S HARD TO LIST ALL THE INDOOR AND OUTDOOR FEATURES OF THIS STUNNING COMMERCIAL SPACE.

PLOT AREA 225 sqyd approx~/2025 sqft approx~



**60' Road
Both Side**

LOCATION

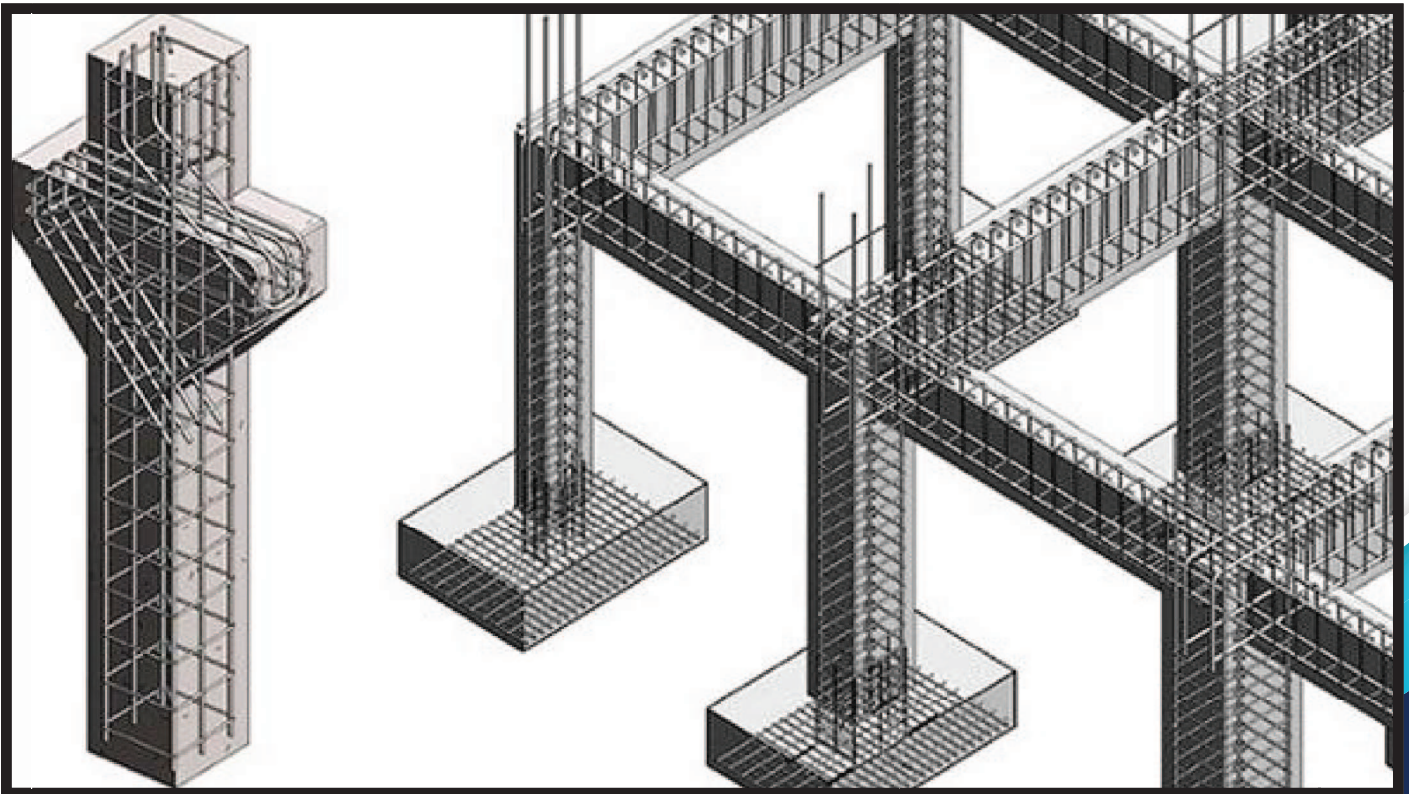


**17 MIN AWAY FROM
TOLICHOWKI**



**12 MIN AWAY FROM
TSPA JUNCTION ORR**

TECHNICAL SPECIFICATIONS



**FOUNDATION & STRUCTURE
RCC FRAME STRUCTURE.**



WALLS :

Outer walls are 9" and inner wall are 6" thickness red/flyash brick, with cement mortar (1:4 prop).

PLASTER: Smooth lappum or altec finish for interiors and two-coat sponge finish for exteriors.

PAINTING: Quality luppam finish and emulsion paint for internal and texture for external walls.

FLOORING: Platinum quality vitrified tiles for Interiors and granite for staircase..

TOILETS: Common toilet available.

ELECTRICAL: Concealed switches, Provision Copper wiring for air conditions Adequate.

LIFT: Accord elevator, 1- 8 passengers lift.

SECURITY: Cctv cameras from the main entrance.

PLUMBING: Cpvc water line with cp-coated Plumbing fixtures.



***“here are some glimpse of
site execution work”***

LAND SURVEYS:



They are preparing for construction, ensuring accurate boundaries, determining value, understanding topography and dividing properties it helps us for
Constructing I.B MALL

SITE EXCAVATION AND EARTHWORK:



***Excavating the process of moving Earth, Rock,
with Equipment for
the construction of I.B MALL***



They are backfilling the areas inside the plinth beams constructed on top of the foundation with the soil extracted during excavation and/or other material for
Constructing I.B MALL

STAIRCASE

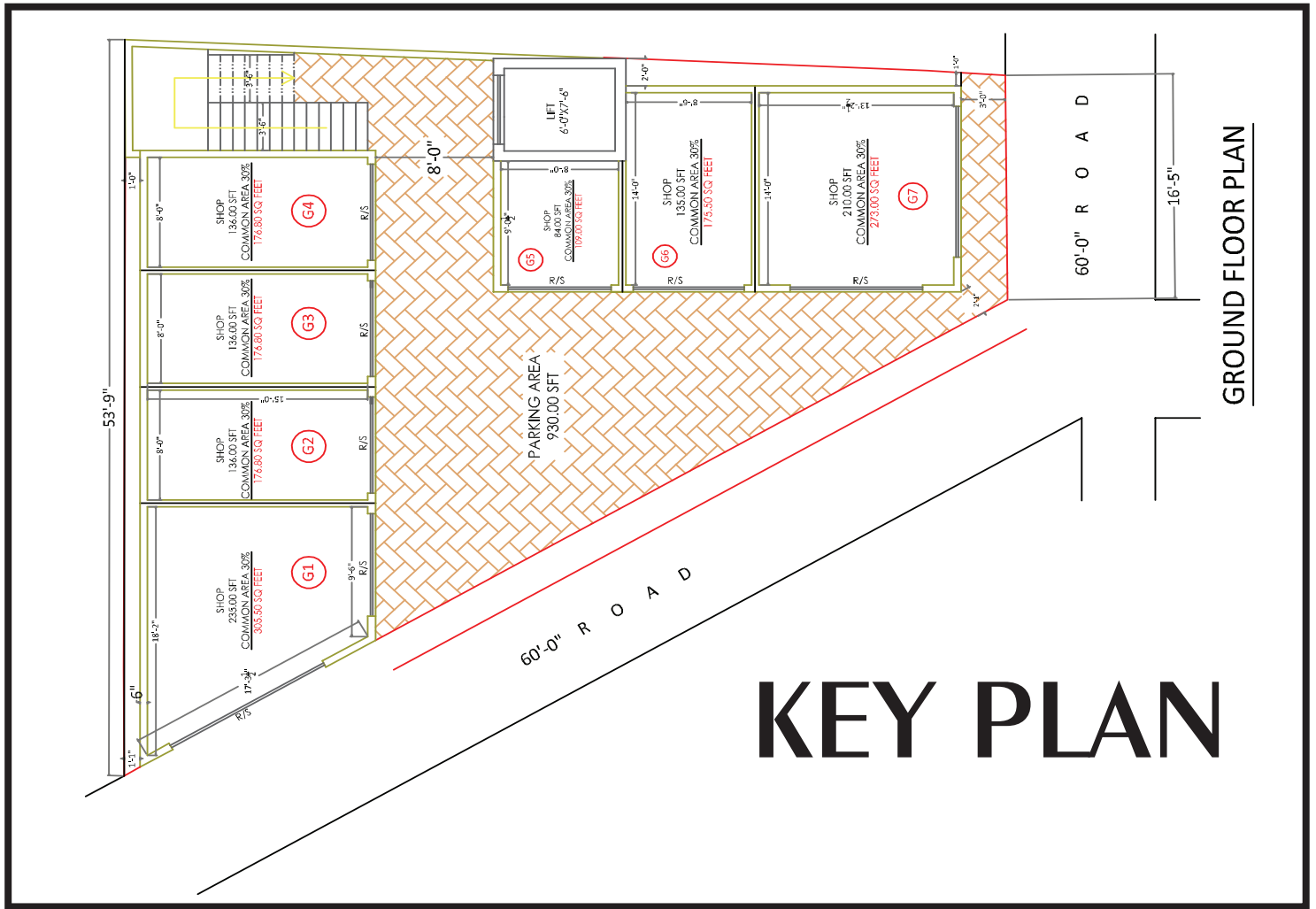




"QUALITY OF CONSTRUCTION"

“COMMERCIAL SPACE FOR SALE WITH SMART RENTAL VALUE”





"WE ARE RENOWNED FOR DELIVERING HIGH-QUALITY CONSTRUCTION SERVICES."

